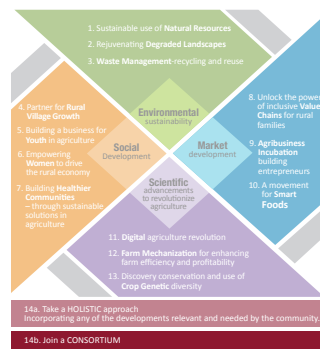


Join a **CONSORTIUM** to **SCALE UP** inclusive rural development and safeguard a sustainable environment

**14b**



**Inclusive** rural development and sustainable environment are a must

Sustainable and **efficient use of scarce water** and **other resources**

Create economic opportunity for **women and youth** in rural areas

More **profitable agriculture** through equitable markets

At a **scale with more impact**



With one rural development initiative in a village or region, 100s of families can benefit and 1,000s of hectares of natural resources can be sustainably managed.

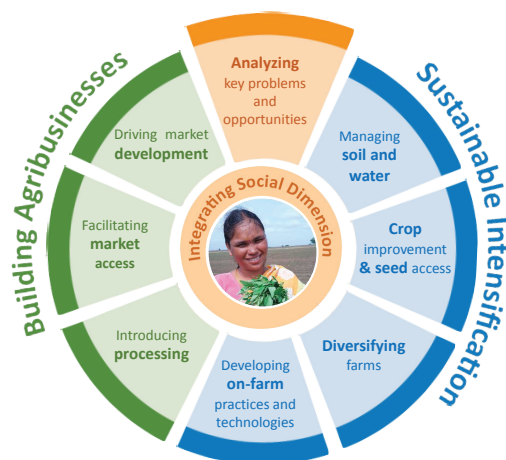
However – through a **consortium to scale up** this work we all can make a bigger impact on millions of lives and hectares.

- ◆ A platform to learn from each other
- ◆ Contribute different skills
- ◆ Reach a critical mass
- ◆ Provide a more holistic approach to development

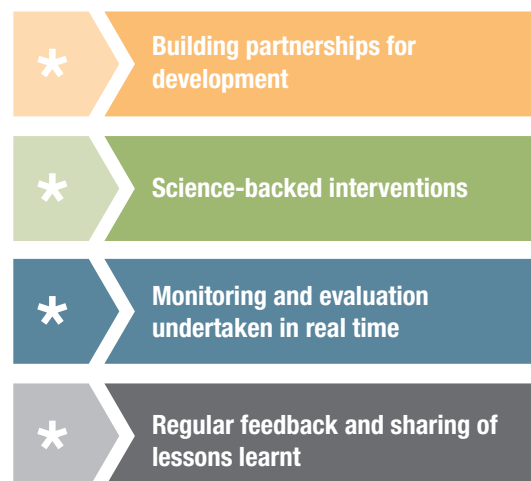
## ► The pathway to impact:



## Holistic solutions considered:



## ► The approach:



## The Bhoochetana initiative in 3 years reached

3 million farmers

3.7 million ha



Farmers made up to \$500 net gain per ha in one season



20-66% yield increase  
5% rise in agriculture growth  
\$1 invested = \$3-14 return



International Crops Research Institute  
for the Semi-Arid Tropics



About ICRISAT: [www.icrisat.org](http://www.icrisat.org)



ICRISAT's scientific information: [EXPLOREit.icrisat.org](http://EXPLOREit.icrisat.org)



Joanna Kane-Potaka | Director, Strategic Marketing and Communication | [j.kane-potaka@cgiar.org](mailto:j.kane-potaka@cgiar.org)